

RIVERSIDE FLIGHT CENTER

TAIWAN 2016



part 141 flight school

examining authority

An aerial photograph of a large aircraft wing, likely from a commercial jet, set against a dramatic sunset sky. The wing is illuminated from below, creating a warm orange glow. The sky transitions from a deep orange near the horizon to a darker teal at the top. The wing's structure, including the fuselage and various panels, is clearly visible.

guaranteed

accelerated

comprehensive

An aerial photograph of a vast mountain range. The peaks are rugged and covered in snow, with some rocky outcrops visible. Below the mountains, a thick layer of white clouds fills the valleys and extends to the horizon. The sky is a clear, deep blue. The overall scene is majestic and serene.

OUR CAMPUS



Richard
Lloyd
Jones, Jr.
Airport



Richard
Lloyd
Jones, Jr.
Airport





FAA-
Tower
Controlled
24-Hours





Engine Performance

65.63

12030 13470 10895 11295

12650 12300 11060 11490



N86705

IN FLIGHT CHECK LIST CESSNA 172

CLIMB	70-85 KIAS	DESCENT	1 Mixture - RICH - Adjust For Smooth Operation
1. Throttle - FULL OPEN		2. Fuel Sel. Valve - BOTH	
2. Mixture - RICH (above 3000')		3. Carb. Heat - AS REQUIRED	
3. Mixture - LEAN (above 3000')			
4. Lights - AS REQUIRED			

BEFORE LANDING

1. Lights - AS REQUIRED	
2. Seats, Seatbelts - SECURE	
3. Mixture - RICH	
4. Fuel Sel. Valve - BOTH	
5. Airbrake - OFF	
6. Carb. Heat - ON	

WINTERIZATION KIT RIGHT AND LEFT WING - CAP COVER AND OIL COOLER COVER PLATE MUST BE REMOVED WHEN THE OUTSIDE AIR TEMPERATURE IS ABOVE 20°F

Instrument panel showing various gauges and dials:

- Speedometer (0-120 MPH)
- Altimeter (0-10,000 FT)
- Vertical Speed Indicator (0-1000 FPM)
- Heading Indicator (0-360 DEGS)
- Engine RPM Gauge (0-2700 RPM)
- Oil Pressure Gauge (0-100 PSI)
- Temperature Gauges (Cylinder Head, Oil, Coolant)
- Master Battery Disconnect Switch

FLIGHT OFFICE



CLASSROOMS



individual briefing rooms



EXIT

EMERGENCY
EXIT
ONLY





multi-media classroom





PILOT BRIEFING AREA



ADMINISTRATION



Training Fleet



Training Capability

23 Flight Instructors

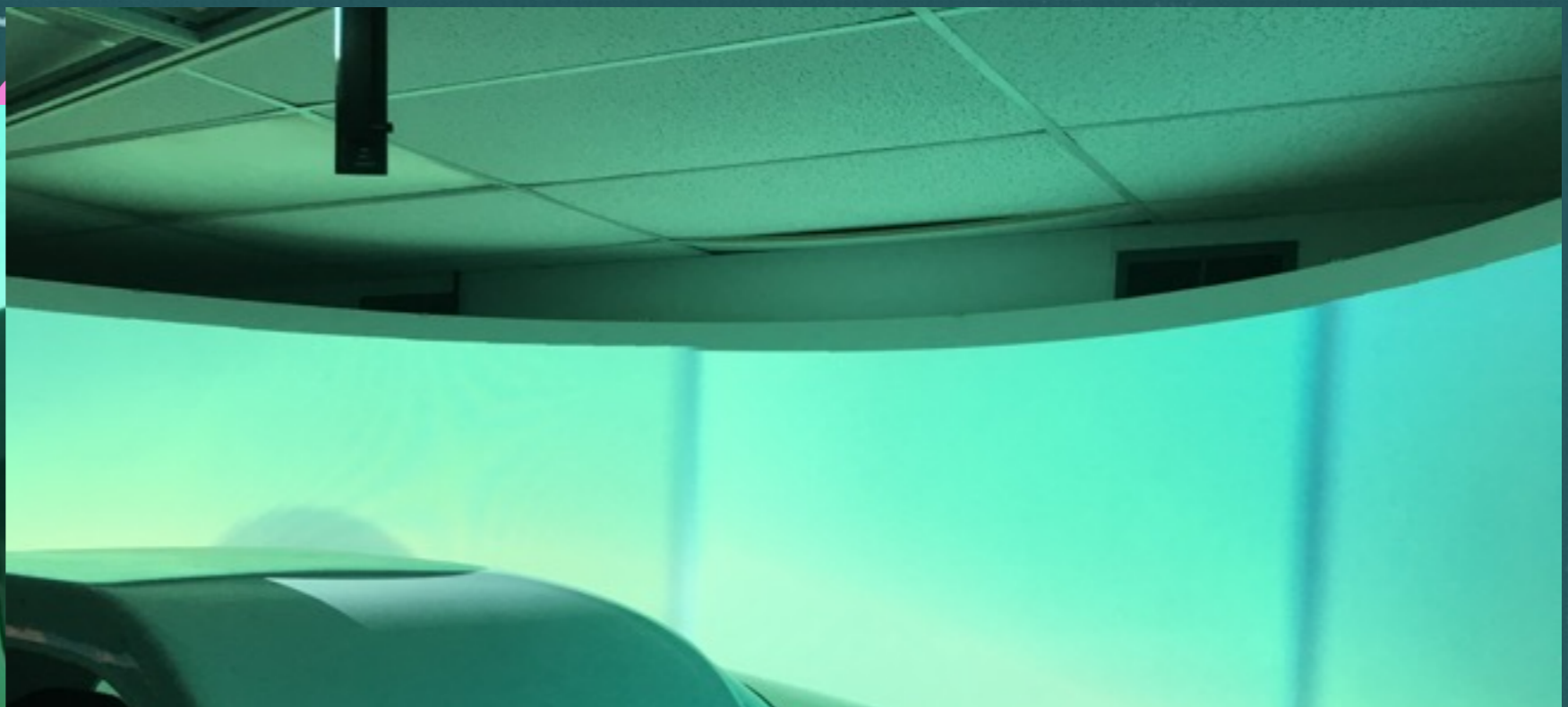
28 Airplanes

6 Enrollments per month

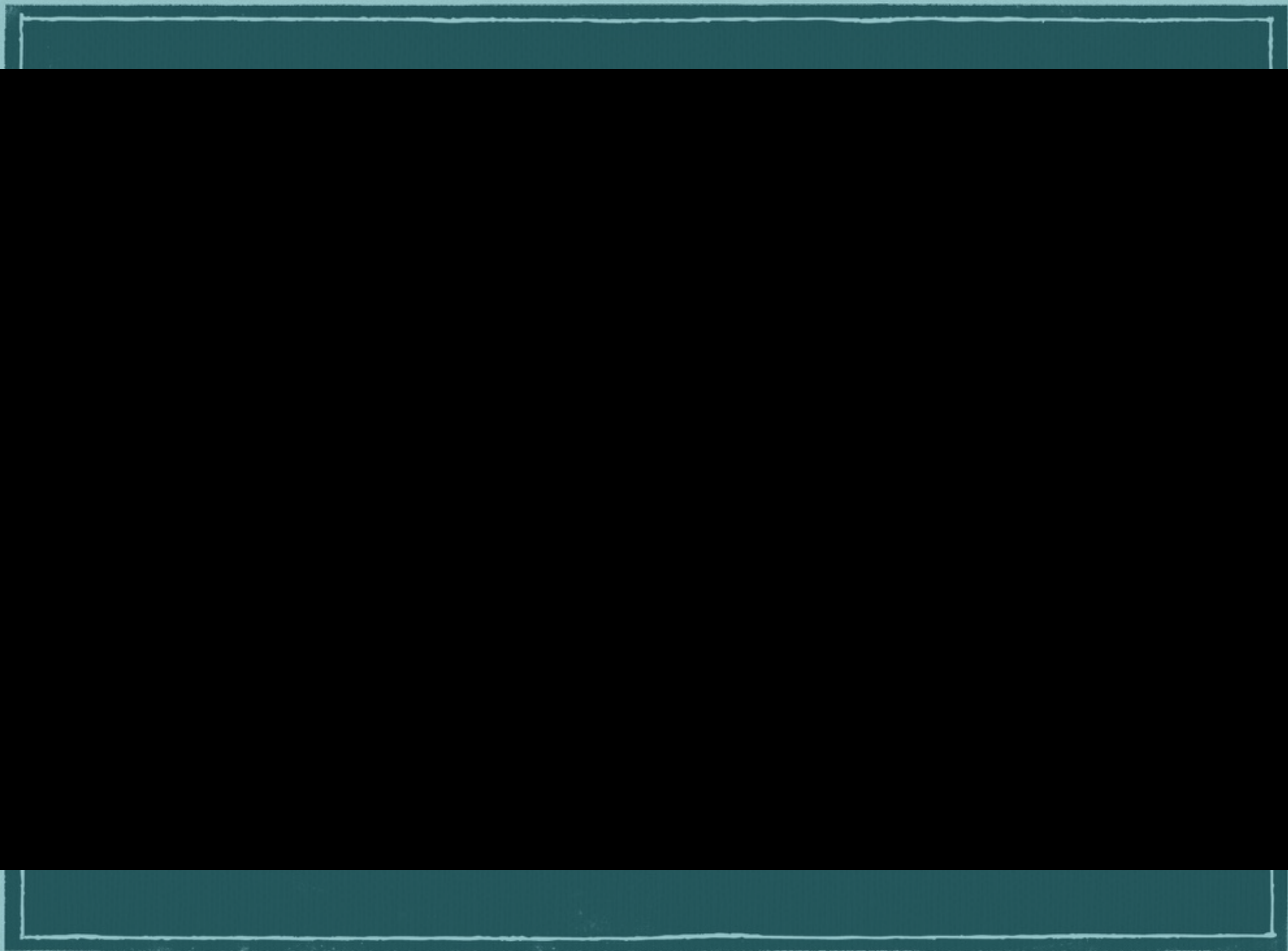
GROUND TRAINING DEVICES



Advanced











CESSNA



- primary trainer
- easy to fly
- easy to learn

CESSNA 172







PIPER SENECA

advanced twin trainer (available on request)

130+ years experience

Flight Training



PRIVATE PILOT

GUARANTEED TO 72 HOURS

- remain below 72 hours and course fees do not change
- books & supplies included, testing, certification and processing fees included

INSTRUMENT RATING

- guaranteed to 72 hours
- supplies, testing, and fees included



COMMERCIAL PILOT

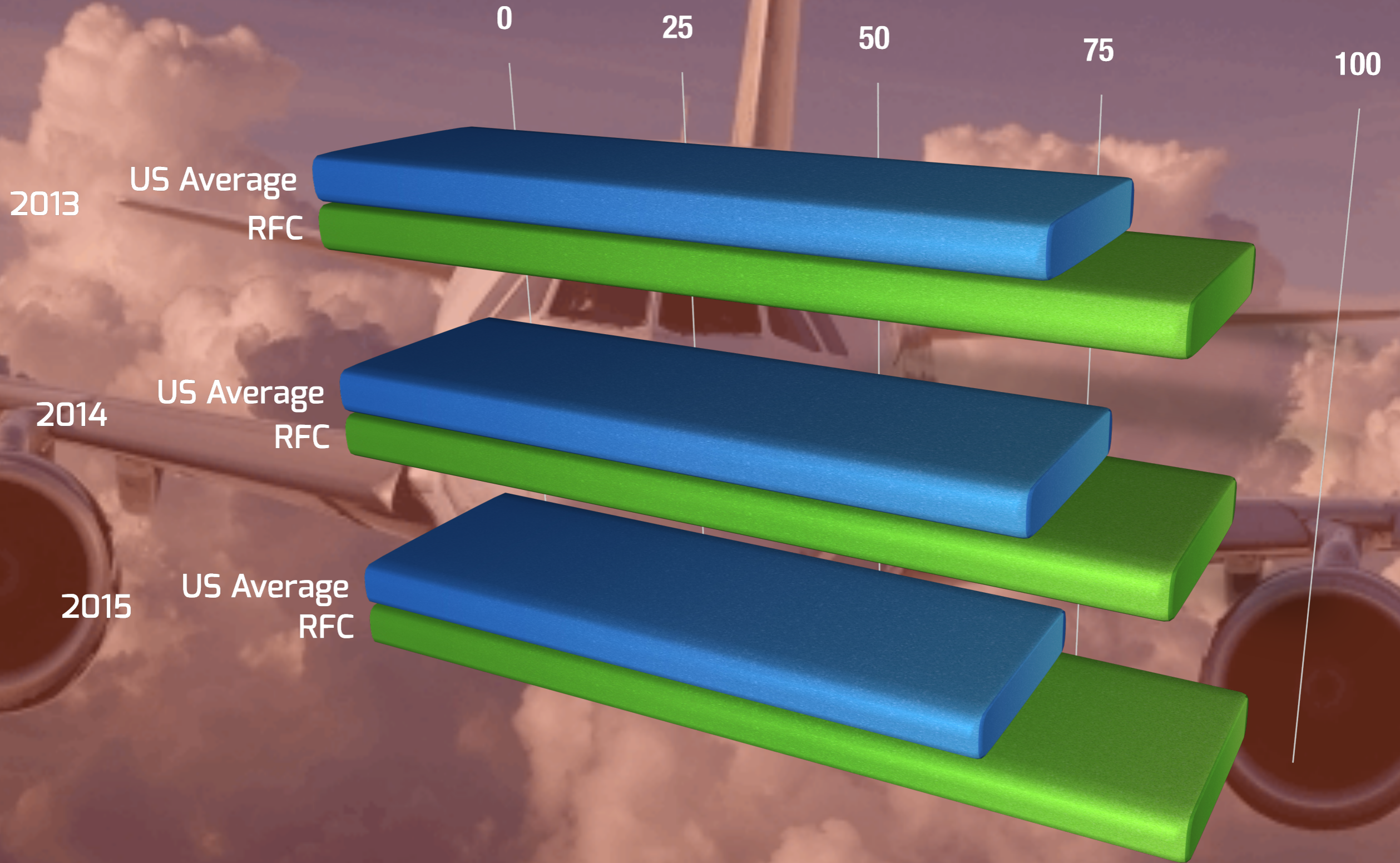


completion to the
commercial pilot
standards guaranteed

8-10 months
average
completion time

Up to 12 months
allowed

RESULTS



GRADUATES



Tuition

Flexible Payments

No Full Payment Upfront

Once guaranteed Course Paid,
no additional Payments

TULSA, OKLAHOMA



low cost of living



friendly

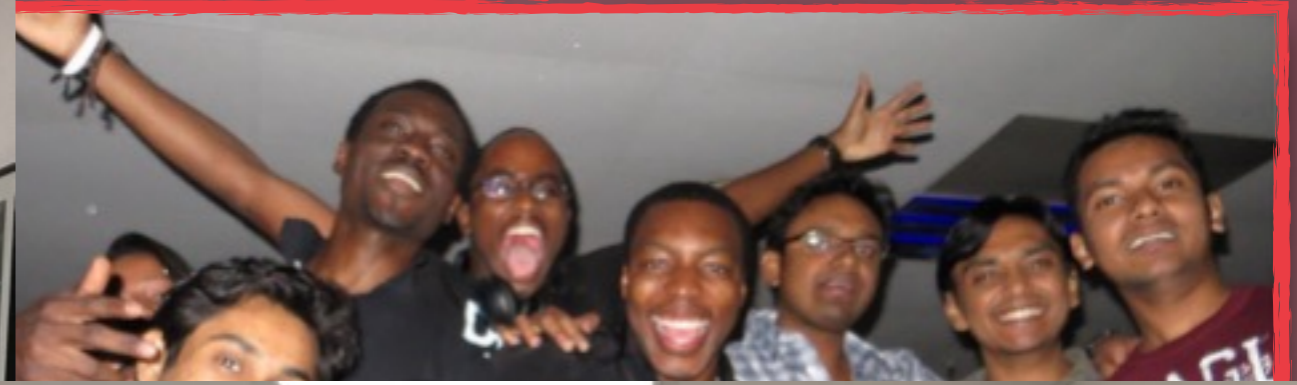


aviation community

HOUSING

- fully-furnished
- included in tuition
- overseen by staff at all times







culture

-
-
-
-
-

racing

rodeo

museums

lake adventures

camping



OUR TRAINING COURSE

- fast
- guaranteed
- all-inclusive
- professional



OUR GUARANTEE



contract price



quality



accelerated training



FIXED PRICE

for the program you select

COMPARED TO OTHERS

- accelerated
- fixed training fees
- all-inclusive
- exceptional training

What now? Questions? Need more information?

Apply today at Riverside Flight Center

www.RiversideFlightCenter.com/apply

